

ULTRASONIC WAVES SKIN

CARE MACHINE

ULTRASONIC WAVES SKIN

ULTRASONIC WAVES SKIN

CARE MACHINE



- Thank you for purchasing this Ultrasonic Waves Skin Care Machine.
- Please read this Operating Instructions manual carefully before use, and keep this book in a safe place for future reference
- This product is designed to take care of normal skin and to beautify it. Any other usage and sales in connection with medical purpose are not supported

Contents

The Principal of Ultrasonic Waves Skin Care Machine	1
Safety Instructions	2
Parts Introduction	3
Operating Methods	
● How to care your face	4
● Basic methods to care your face.	4~5
● Special methods to care your face.	6~7
● How to care your body	8
● The methods for caring your body	8~11
After treatment	11
About charging	12
Frequently asked Questions and Answers (Q&A)	12

Guarantee

Specification

Name : Ultrasonic Waves Skin Care Machine
Adaptor input: AC 100-240V
Adaptor output: DC 5V 1000mA
Dimension : 17cm* 3.8cm*4.3cm
Weight : 190 g
Frequency : 1M Hz \pm 5%

The Principal of Ultrasonic Waves Skin Care Machine

Ultrasonic waves are higher than 20000Hz that can not be heard by human. It has been widely used in medical treatment. In recent years, we are using the ultrasonic waves technology in the skin care. Ultrasonic Waves Skin Care Machine has become one of the major skin-care products in most beauty salons.

The functions of ultrasonic waves to human skin:

- 1.Mechanical touch function
- 2.Heating function and physical-chemical function

Ultrasonic waves can cause cubage and movement changes of human cell. This is known as fine massage to cell. It stimulates and adjusts cell membrane. It enhances overpass performance of epidermis and the temperature of inner skin goes up by 0.5-1 °C. Therefore, it improves the absorption of nutrition for skin, speeding up meta bolism, and regeneration of epidermal tissue.

Ultrasonic waves can also decompose the waste around fat, consume energy, renovate damaged lymph and capillaries vessel, so that it can make you lose weight and achieve good shape.

Safety Instructions

- This appliance is only intended to care and beautify skin. Please do not use it for any other purpose.
- Please obey the Operating Instruction book and control the usage frequency. Please shorten the operating time for the first time use or if your skin is very sensitive.
- Please stop using it if you experience any abnormalities. Consult your doctor straight away.
- If you are pregnant or if you think you might be pregnant, consult your doctor before using this appliance.

Do not use this appliance

- if you are pregnant.
- on forehead, temple, ear, throat, eyes and the surrounding area of eyes. directly on some bone joints such as elbow and knee and so on..
- On skin that is sunburned or inflamed.
- if you have Dermatitis or any skin allergy caused by any cosmetic make-up.
- on the areas where there are skin rashes, spots and inflamed skin.
- on any macula where your skin is experiencing itching or feverish.
- on any macula caused by physical stimulation.
- on any parts of your body where you have had plastic surgery .
- on the areas where you had hair removed by cosmetic hair removed cream or by shaver.
- On any parts of your body or skin which have not been mentioned in this operating instruction book.

Operations and Maintenance Precautions

- Do not use this appliance if electric wires, plug and socket are overheated, damaged or loosen.
- Do not place it on any wet surface or close to water.
- Do not operate nor touch this appliance if your hands are wet.
- Switch power off and unplug from the mains before storage
- Keep children away from the appliance.
- Children must not operate this appliance.

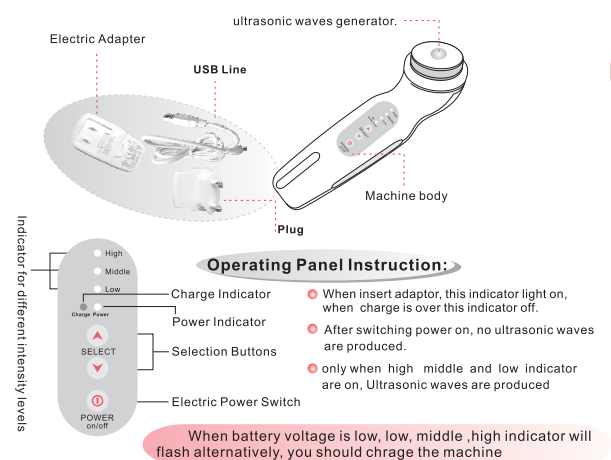
* Please do allergy test before using for the first time.

The Simple Allergy Test:

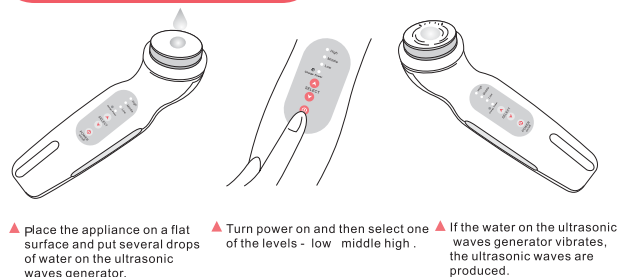
1. Cleanse your wrist.
2. Apply a portion of the special essence on the cleansed area, let it dry naturally (During the test, please don't touch water nor wash the essence away). If you experience allergy or any skin abnormalities, stop the test immediately and contact your doctor or nearest hospital straight away.
3. If after 48 hours, no allergy or any other forms of skin abnormalities appear, you may enjoy using this special unique essence and equipment regularly.



Parts introduction



Operation Procedure and Testing



Operation Method:

How to care your face (select low level)

- 1. Thoroughly remove make-up and impurities first. The ultrasonic waves skin-care treatment must be performed on the cleansed skin.
- 2. Turn power on and then the indicator light is on.



- 3. Apply appropriate portion essence on your face and avoid eye area. Please ensure the treatment area is well covered with the essence. (Note: We highly recommend you to use our designated essence for its best performance on conducting ultrasonic waves)

- 4. Apply appropriate portion essence on the ultrasonic waves generator.



- 5. Press intensity button to select low level.

Once the machine begins to output Ultrasonic waves, the timer starts. After 10 minutes the machine will be turned off automatically.



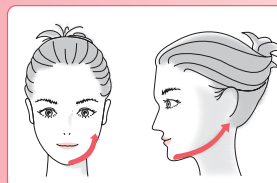
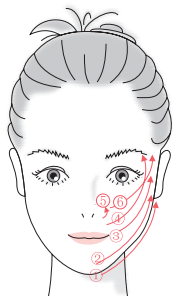
Suggestion: You'd better use the designed essence to transfer ultrasonic waves.

Basic method to care your face

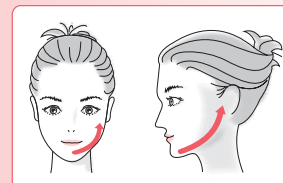
Step 1 it requires 8 minutes.

Using ultrasonic waves generator to massage skin equably.

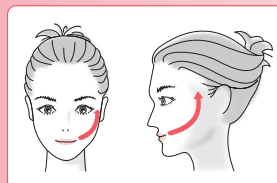
- Step 1 it requires 8 minutes. Using ultrasonic waves generator to massage skin equably. It requires 4 minutes. First, Using ultrasonic waves generator to care the right side of your face for 4 minutes (Please use a timer or your watch as a timer). Then working on the left side of your face for 4 minutes. Please operate the appliance in the order indicated in the diagram, working upward motion (about three times).



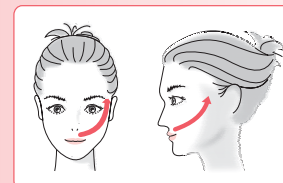
1. Along indicated route from jaw to the root of your ears



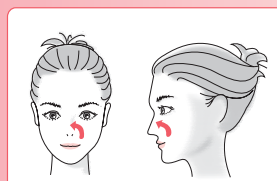
2. Along indicated route from jaw to the front of your ears



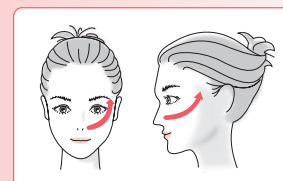
3. Along indicated route from the corner of mouth to the top of your ear



4. Along indicated route from the bottom of nose towards the area near your eyebrow



5. Along indicated route caring both sides of your nose[nosewing]

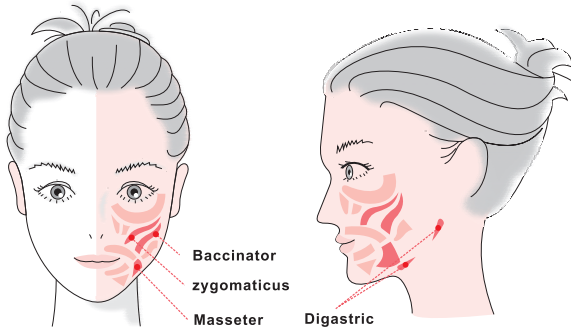


6. Along indicated route from nose towards the area near temple

Special method to care your face

(Operation time: 2 minutes)

The gravity of our earth, increasing age, getting fat, all these factors are causing your skin loosening, the prolapsed skin and having a double chin. For the following operations, it takes 30 seconds-1 minutes for each area. Please apply slight strength on the ultrasonic waves generator to lift up the skin and muscle following the arrow direction indicated in the diagram. After this basic skin-care method, now you may use special skin care methods to operate.



Face muscles are shown in the above drawing.

- You can achieve better results if you use the ultrasonic waves generator gliding parallel to the structure of muscles

Operation to tighten face



- Operate from the corner of mouth towards the area near eyes.

Operation to pull up the end of mouth



- Operate from the corner of mouth in upward motion

Operation to tighten double chin



- Glide it from chin to bottom of ear, from chin to the corner of your mouth. And always glide it from lower parts to the upper parts.

About T position caring



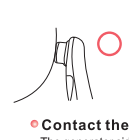
- Up and down your nose for one or two minutes.

Eczema and acne care

- Do not operate on the area where there are eczema, macula, acne, sunburn etc directly. However, you may care the surrounding skin area to aid in the natural healing of skin disorders.

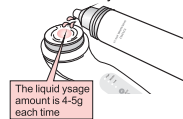


Suggestion for skin-care



- Contact the generator side**
The generator side must tap tightly on your skin.

- Do not use it on your forehead, eye and throat or it will make your skin unhealthy.



The liquid usage amount is 4-5g each time

- Add some essence if the generator side is not slidy.



- The movement of the generator side**
1. Move slowly from the chin to behind ear within 5 seconds.
2. Move from down to up, left to right geometrically.

The methods to care certain parts of your body

Maximum treatment for the same part of your body is up to 10 minutes each time, but not more than twice a day, not more than three times a week

- (1) Please wash your body thoroughly with soap and water to remove any impurities.
- (2) Please apply an appropriate portion of essence on the part of your body before treatment
- (3) Put an appropriate portion of essence on the ultrasonic waves generator.
- (4) Press power button on and the power red indicator light will be on.
- (5) Select intensity level (Treatment on arms and calves please select middle level ; and for treatment on waist, abdomen, buttocks and thigh - please select high level)
- (6) Please place the ultrasonic waves generator on your body gently yet with slightly pressure on. Please ensure that there is no gap between them.
- (7) Every 10 minutes the alarm, a beeping sound will go off and the appliance will be turned off automatically. Then you can begin with another parts of your body by pressing the power button on. If you would like to stop the machine before that, please press power button to off position. .
- (8) After treatment, please use a wet towel to wipe off any essence from your body.

Alternatively, you can wash it away with warm water. Please use soft tissue (Do not use water, gasoline or alcohol.) to wipe off the remaining essence from your ultrasonic waves generator.



Please do not use this appliance directly on the center of throat, around eyeball, eyelid, some bone joints such as elbow and knee and so on.

Body treatment:

※ Please note that this is only general operating methods. Please consult our skin-care adviser for any sophisticate and professional operating methods.

Treatment on Two arms

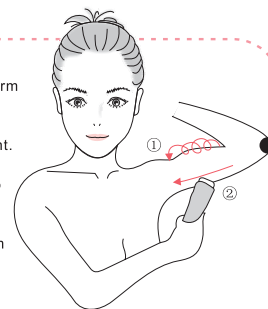
it will tighten the loosen muscles in your arm and it also get rid of the fat in the arms.

Intensity level: Select **Middle** level

Time: it takes 35 minutes for this treatment.

Procedure:

1. Using the ultrasonic waves generator to draw continuous circles from lower part towards upper part.
2. Or follow the route shown in the diagram
3. Avoid contact with the elbow directly.



*Treatment for Waist and abdomen

***If you are a pregnant ,do not use this appliance**

Functions: To lose weight and regain good shape

Intensity level: Select **High** level

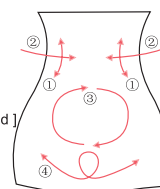
Time: it takes 810 minutes for this treatment

Waist:

- 1 Using the ultrasonic waves generator to glide up and down parallel to the structure of waist's muscles.
- 2 Using the ultrasonic waves generator to glide from outside inwards to the center of the waist

Abdomen:

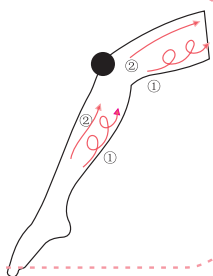
- 1 Using the ultrasonic waves generator to draw circles around the belly button indicated in diagram ③
- 2 As indicated in ④ , using the ultrasonic waves generator to glide on your abdomen as if you are drawing big circles



Calves

Functions: To lose weight and regain good shape.
Intensity level: Select **Middle** level
Time: it takes 3-5 minutes for this treatment.
Intensity level: Select **High** level
Time: it takes 8-10 minutes for this treatment

Step 1: Using the ultrasonic waves generator to draw circles from lower part towards upper part of the thigh.
Step 2: Using the ultrasonic waves generator to glide straightly from the lower part of the thigh to the upper part. (Like route 2)
Note: Please do not operate on the knees directly. (Please avoid the bone joints)

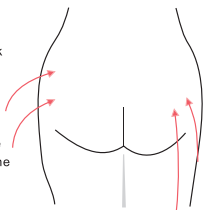


Tighten and pull up your buttocks

Functions: As you know our muscles of buttock can get loosening, and lose its shape. This treatment on buttock can firm the muscles and improve its shape.

Intensity level: Select **High** level
Operating Time: 10 minutes

Methods: Using the ultrasonic waves generator to glide from its lower part to upper part, from outside towards the center of buttock as indicated in the drawing.



Further Special Treatments

Intensity level: Select **Middle** level
Operating Time: it takes maximum 1 minute for each foot.
Please operate as indicated in the diagram for treating the bottoms of the feet.
This treatment can improve the flow of lymph, so it is helpful to cure edema.

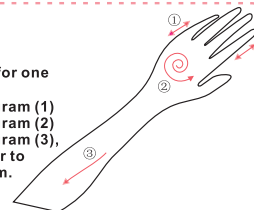


Treatment for hands and arms

Intensity level: Select **Low** level

Operating Time: it takes 5 minutes for one hand and one arm

Step 1: Operate as indicated in diagram (1)
Step 2: Operate as indicated in diagram (2)
Step 3: Operate as indicated in diagram (3), using the ultrasonic waves operator to glide from your fingertip to your arm.

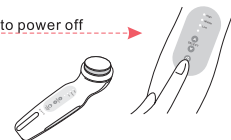


Safety Cautions

- If you can feel the ultrasonic waves generator is overheated, please turn off the machine immediately.
- Please make sure that the ultrasonic waves generator is continuously gliding. Do not stop gliding in one area.
- Please do not use this appliance on your skin if you have not thoroughly wet your skin with the special designed skin-care essence. (You must use the special designed skin-care essence that can be purchased in the shop.)

After Usage

Stop the effuse of ultrasonic waves ,press power to power off



Cleanse the essence on the generator



- Do not cleanse with water
- Do not cleanse with petrol, banana water, alcohol.

Cleanse the remnants essence on the skin with water



About Charging

The capacity of battery in storage and transportation is Only 30 % ,so please you charge it before usage. The normal charge time is 3 hours.



● Recharge with your computer USB source by connecting machine to computer with USB line.

● Recharge with adaptor by inserting adaptor plug into wall socket.

● Recharge with charge socket with computer or adaptor.

Q&A

● When is the best time to care your skin?

The Best time is that before you go to bed, as after the treatment your skin can have a good rest and absorb the nutrition thoroughly.

● How many times can I use this Ultrasonic Waves Skin Care Machine?

You can operate the machine for the same part of the body maximally 10 minutes a day and not more than 3 times a week. Otherwise your skin will be over stimulated, and it can not achieve the desirable results.

● Why should we use special designed essence?

special designed essence is best for conducting Ultrasonic waves into the skin. (If there is air between the ultrasonic waves generator and the skin, the air will affect conducting the ultrasonic waves into the skin). Our essence is specially designed and produced for Ultrasonic Waves Skin Care Machine. We can guarantee essence's quality, performance and safety and it has achieved the medicine manufacturers' standards.

【Guarantee Certificate】

Product model

Purchase date

Purchase place

Sales Dept

● One year Repair Guarantee

1. In the unlikely event that your product develops a fault within the first two years of purchase
2. Please return your product along with your receipt and the original guarantee certificate and we will repair it free of charge provided you have operated it according to the Operating Instructions book
 - (1) Break down or damages due to not following the operating instructions.
 - (2) incorrect or unauthorized repair
 - (3) accidental damages during your own transportation, or you drop it on the floor or you deliberately damage or neglect the product after purchase.
 - (4) fire, earthquake, weather such as flood, lightning, high wind.
3. This guarantee is limited to products bought and used in Mainland China. Will be issued.